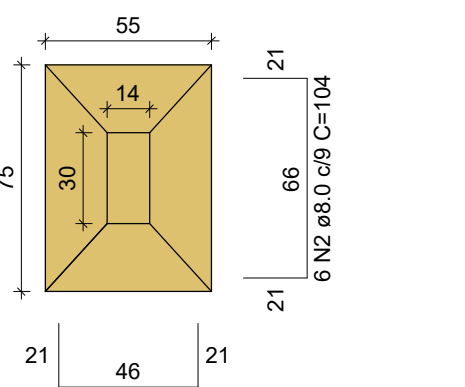


S1=S17=S64=S70=S78=S79=S84=S88=S94=S95  
=S106=S113=S152

PLANTA

ESC 1:25

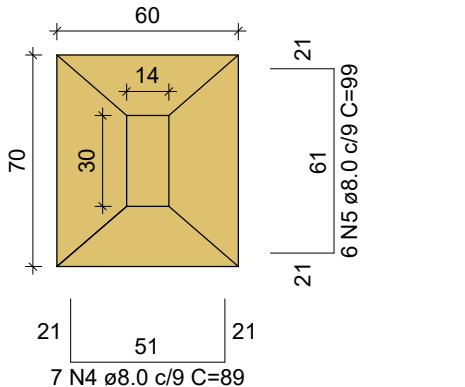


Solo com capacidade de suporte > 1.50 kgf/cm²  
Solo compactado sobre a sapata  
peso específico > 1600.00 kgf/m³

S12

PLANTA

ESC 1:25

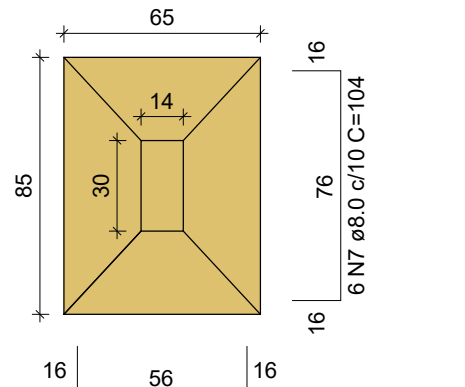


Solo com capacidade de suporte > 1.50 kgf/cm²  
Solo compactado sobre a sapata  
peso específico > 1600.00 kgf/m³

S56=S62=S72=S96=S105=S111=S121

PLANTA

ESC 1:25

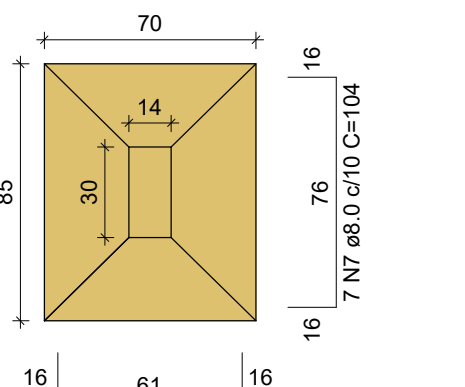


Solo com capacidade de suporte > 1.50 kgf/cm²  
Solo compactado sobre a sapata  
peso específico > 1600.00 kgf/m³

S91=S98=S155

PLANTA

ESC 1:25



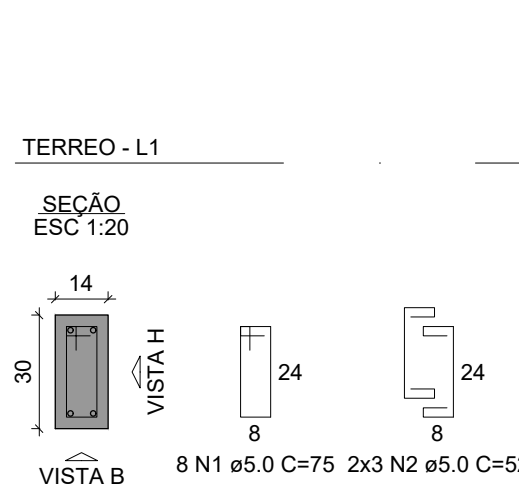
Solo com capacidade de suporte > 1.50 kgf/cm²  
Solo compactado sobre a sapata  
peso específico > 1600.00 kgf/m³

P1=P2=P3=P4=P5=P6=P7=P8=P9=P10=  
=P11=P12=P13=P14=P15=P16=P17=P18=  
=P19=P20=P21=P22=P23=P24=P25=P26=  
=P27=P28=P32=P35=P38=P41=P44=P45=  
=P46=P47=P48=P50=P51=P53=P54=P55=  
=P56=P57=P58=P59=P60=P61=P62=P63=  
=P64=P65=P66=P67=P68=P70=P71=P72=  
=P73=P74=P75=P76=P77=P78=P79=P80=  
=P81=P82=P83=P84=P85=P86=P87=P88=  
=P89=P90=P91=P92=P93=P94=P95=P96=  
=P97=P99=P100=P101=P102=P103=  
=P104=P105=P106=P107=P108=P109=  
=P110=P111=P112=P113=P114=P115=  
=P116=P117=P119=P120=P121=P122=  
=P123=P124=P125=P126=P127=P128=  
=P132=P135=P138=P141=P144=P148=  
=P149=P150=P151=P152=P153=P154=  
=P155=P156=P157=P158=P159=P160=  
=P161=P162=P163

TERREO - L1

SEÇÃO

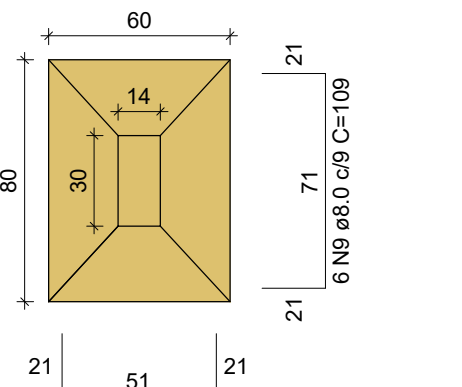
ESC 1:20



S2=S4=S18=S28=S44=S49=S59=S67=S71=S80  
=S82=S93=S108=S116=S126=S128=S147=S153

PLANTA

ESC 1:25

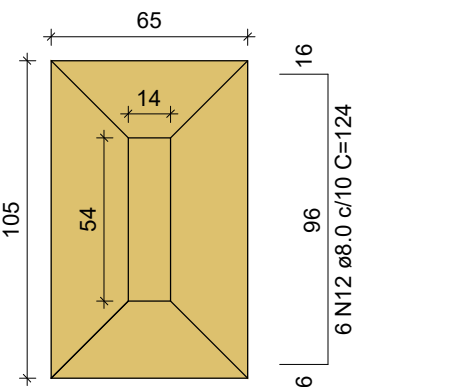


Solo com capacidade de suporte > 1.50 kgf/cm²  
Solo compactado sobre a sapata  
peso específico > 1600.00 kgf/m³

S29=S129=S146

PLANTA

ESC 1:25

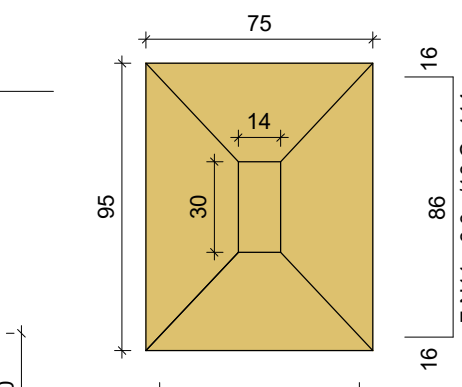


Solo com capacidade de suporte > 1.50 kgf/cm²  
Solo compactado sobre a sapata  
peso específico > 1600.00 kgf/m³

S86=S89=S124=S157

PLANTA

ESC 1:25

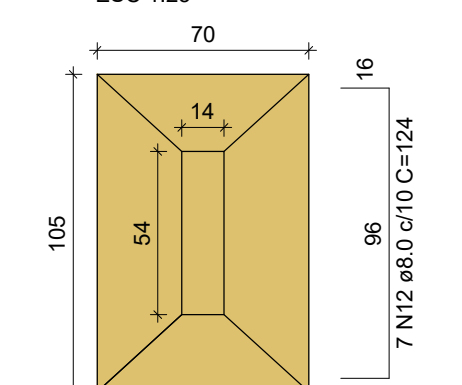


Solo com capacidade de suporte > 1.50 kgf/cm²  
Solo compactado sobre a sapata  
peso específico > 1600.00 kgf/m³

S145

PLANTA

ESC 1:25



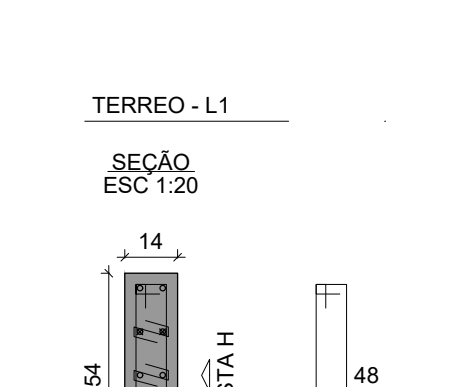
Solo com capacidade de suporte > 1.50 kgf/cm²  
Solo compactado sobre a sapata  
peso específico > 1600.00 kgf/m³

P30

TERREO - L1

SEÇÃO

ESC 1:20



Solo com capacidade de suporte > 1.50 kgf/cm²  
Solo compactado sobre a sapata  
peso específico > 1600.00 kgf/m³

VISTA H

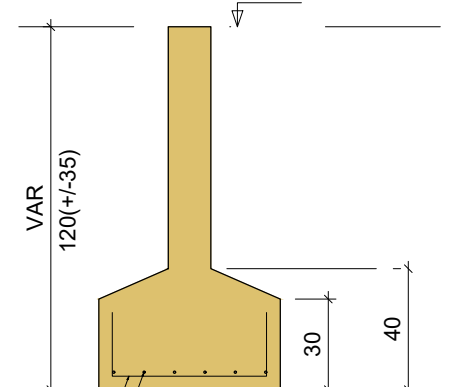
ESC 1:25



TERREO - L1

SEÇÃO

ESC 1:20

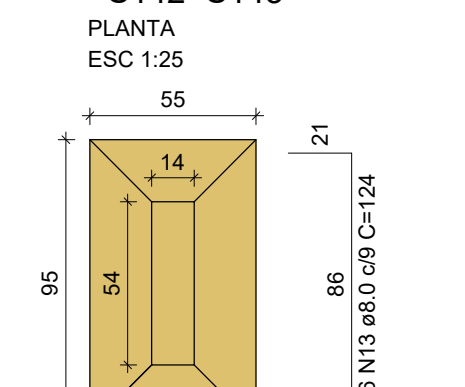


Solo com capacidade de suporte > 1.50 kgf/cm²  
Solo compactado sobre a sapata  
peso específico > 1600.00 kgf/m³

S30=S31=S33=S34=S36=S37-S39-S40-S42-S43  
=S130-S131-S133-S134-S136-S137-S139-S140  
=S142-S143

PLANTA

ESC 1:25



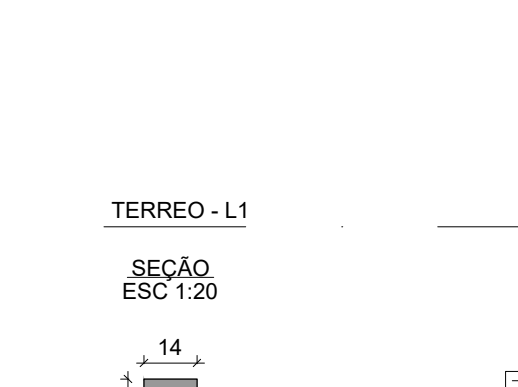
Solo com capacidade de suporte > 1.50 kgf/cm²  
Solo compactado sobre a sapata  
peso específico > 1600.00 kgf/m³

P29=P31=P33=P34=P36=P37=P39=P40-P42=  
=P43=P129=P130=P131=P133=P134=P136=  
=P137=P139=P140=P142=P143=P145-P146

TERREO - L1

SEÇÃO

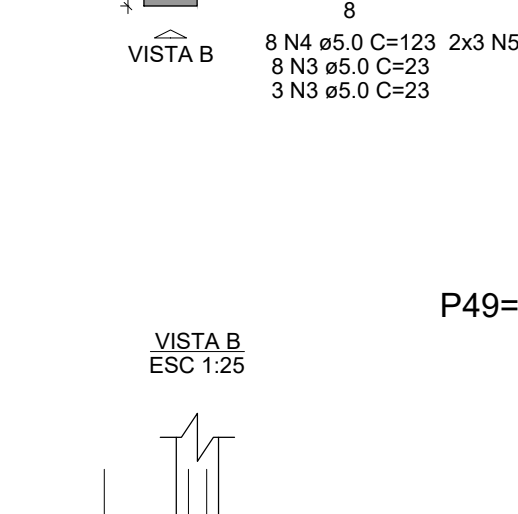
ESC 1:20



Solo com capacidade de suporte > 1.50 kgf/cm²  
Solo compactado sobre a sapata  
peso específico > 1600.00 kgf/m³

VISTA H

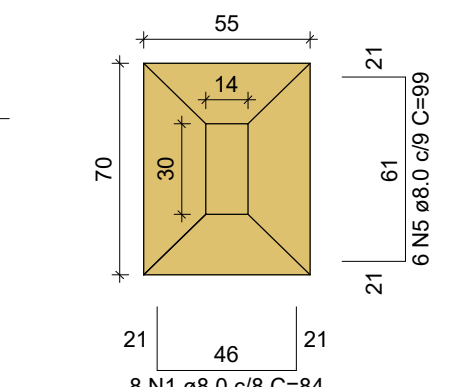
ESC 1:25



S3=S5=S7=S9=S11=S13=S14=S15=S16=S19=S20  
=S21=S22=S23=S24=S25=S26=S27-S32-S35  
=S38-S41=S45=S46-S47-S48-S50-S53-S54  
=S55-S57-S60-S61-S63-S66-S68-S69-S73  
=S74-S75-S76-S77-S81-S83-S85-S87-S90  
=S92-S97-S99-S100-S101-S102-S103-S104  
=S107-S109-S110-S112-S115-S117-S118-S119  
=S120-S122-S123-S125-S127-S132-S135-S138  
=S141-S144-S148-S149-S150-S151-S154-S156  
=S158-S160-S162-S163

PLANTA

ESC 1:25



Solo com capacidade de suporte > 1.50 kgf/cm²  
Solo compactado sobre a sapata  
peso específico > 1600.00 kgf/m³

S51=S58-S65-S114

PLANTA

ESC 1:25



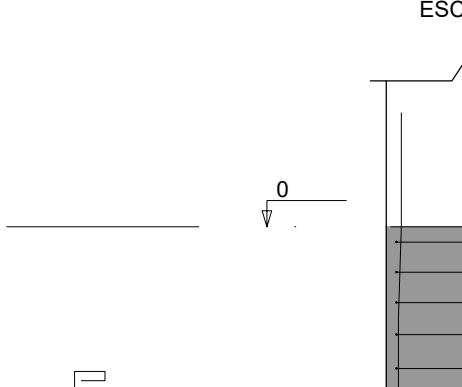
Solo com capacidade de suporte > 1.50 kgf/cm²  
Solo compactado sobre a sapata  
peso específico > 1600.00 kgf/m³

P49=P52=P69=P98-P118

TERREO - L1

SEÇÃO

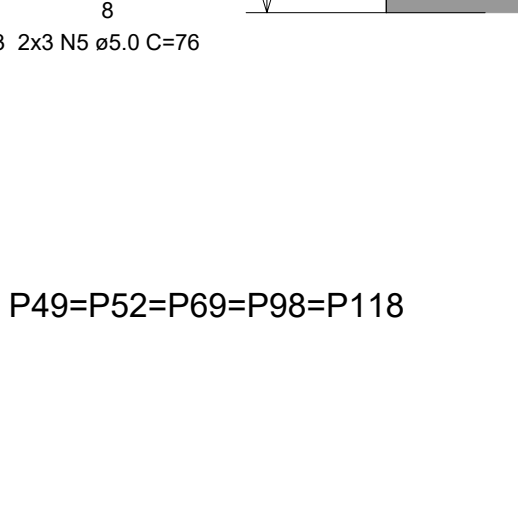
ESC 1:20



Solo com capacidade de suporte > 1.50 kgf/cm²  
Solo compactado sobre a sapata  
peso específico > 1600.00 kgf/m³

VISTA H

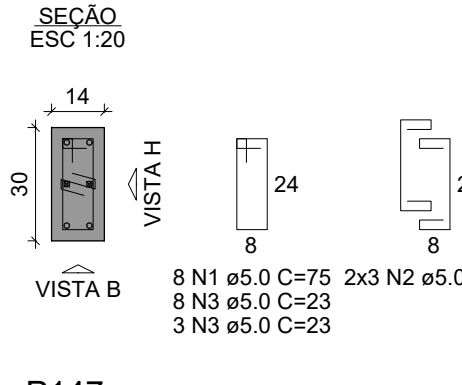
ESC 1:25



TERREO - L1

SEÇÃO

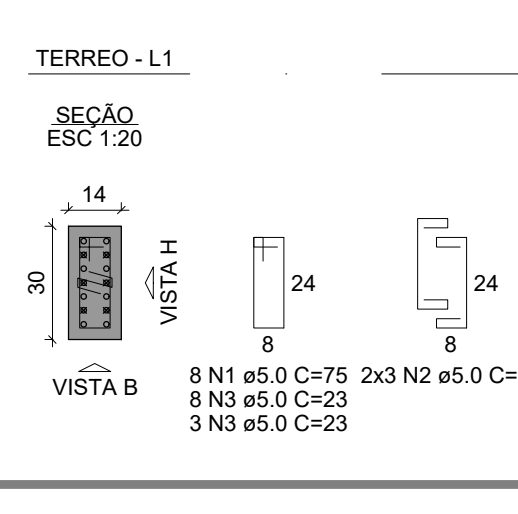
ESC 1:20



Solo com capacidade de suporte > 1.50 kgf/cm²  
Solo compactado sobre a sapata  
peso específico > 1600.00 kgf/m³

VISTA H

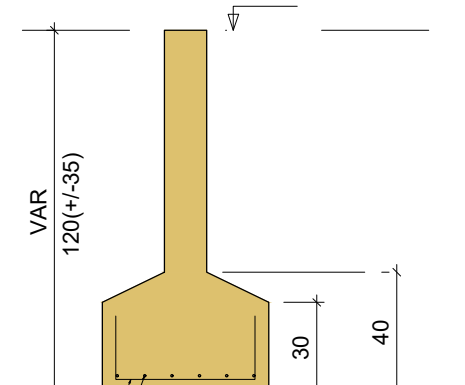
ESC 1:25



TERREO - L1

SEÇÃO

ESC 1:20

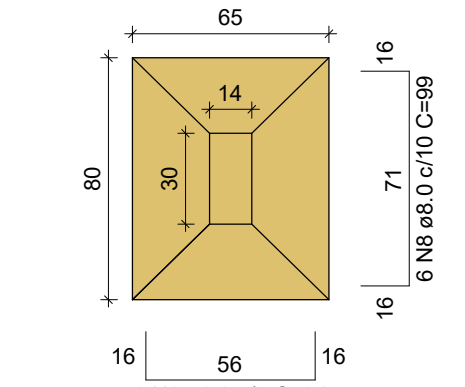


Solo com capacidade de suporte > 1.50 kgf/cm²  
Solo compactado sobre a sapata  
peso específico > 1600.00 kgf/m³

S51=S58-S65-S114

PLANTA

ESC 1:25



Solo com capacidade de suporte > 1.50 kgf/cm²  
Solo compactado sobre a sapata  
peso específico > 1600.00 kgf/m³

P147

TERREO - L1

SEÇÃO

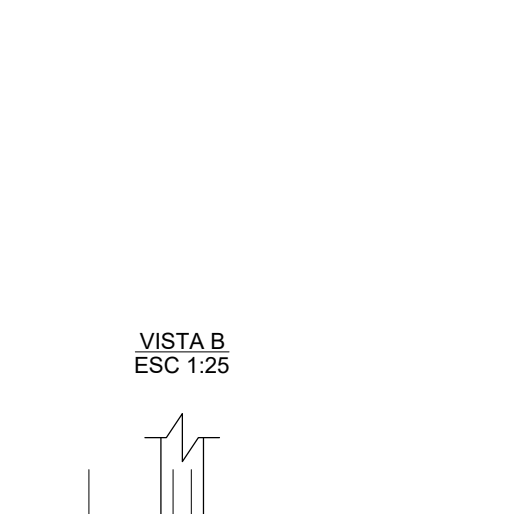
ESC 1:20



Solo com capacidade de suporte > 1.50 kgf/cm²  
Solo compactado sobre a sapata  
peso específico > 1600.00 kgf/m³

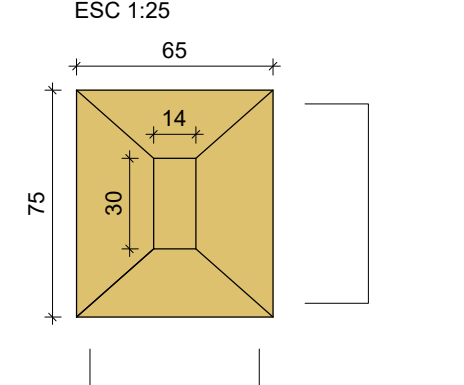
VISTA H

ESC 1:25



PLANTA

ESC 1:25

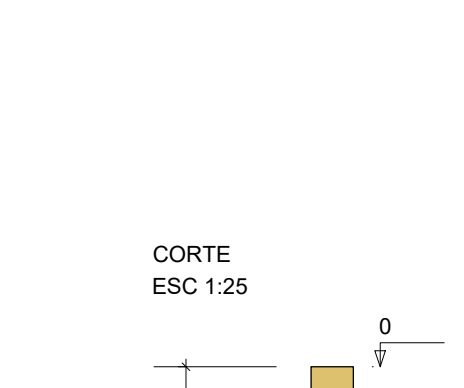


Solo com capacidade de suporte > 1.50 kgf/cm²  
Solo compactado sobre a sapata  
peso específico > 1600.00 kgf/m³

TERREO - L1

SEÇÃO

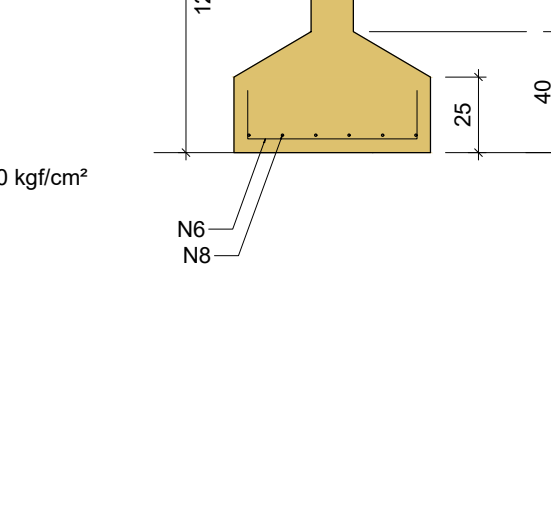
ESC 1:20



Solo com capacidade de suporte > 1.50 kgf/cm²  
Solo compactado sobre a sapata  
peso específico > 1600.00 kgf/m³

VISTA H

ESC 1:25



TERREO - L1

SEÇÃO

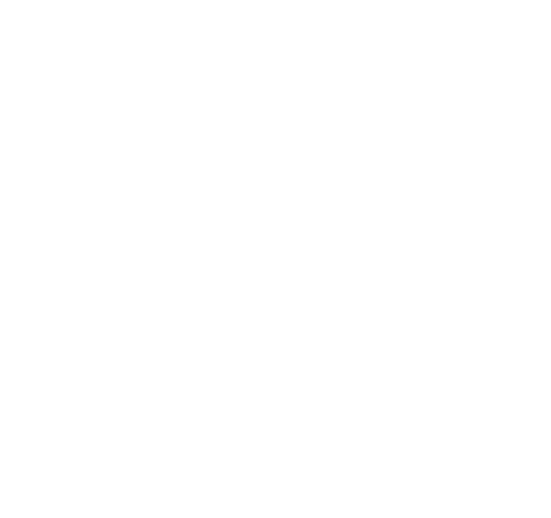
ESC 1:20



Solo com capacidade de suporte > 1.50 kgf/cm²  
Solo compactado sobre a sapata  
peso específico > 1600.00 kgf/m³

VISTA H

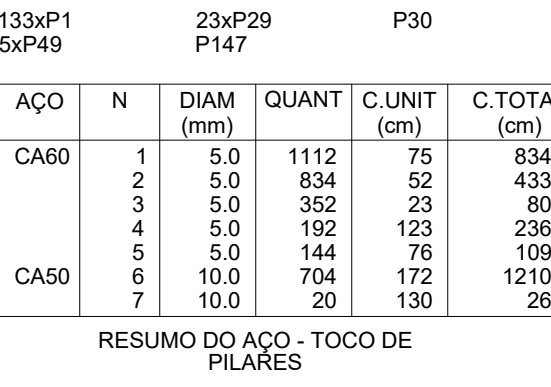
ESC 1:25



TERREO - L1

SEÇÃO

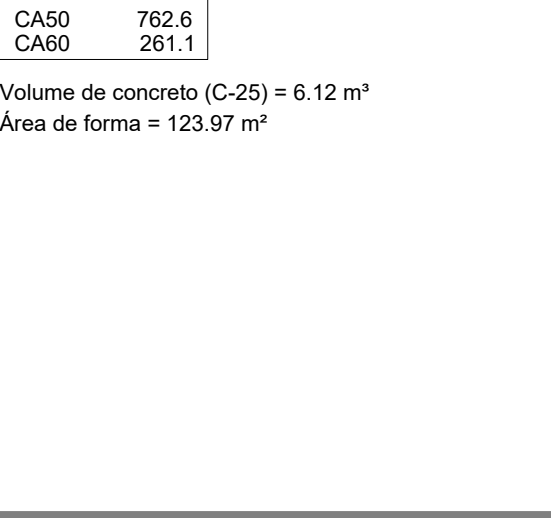
ESC 1:20



Solo com capacidade de suporte > 1.50 kgf/cm²  
Solo compactado sobre a sapata  
peso específico > 1600.00 kgf/m³

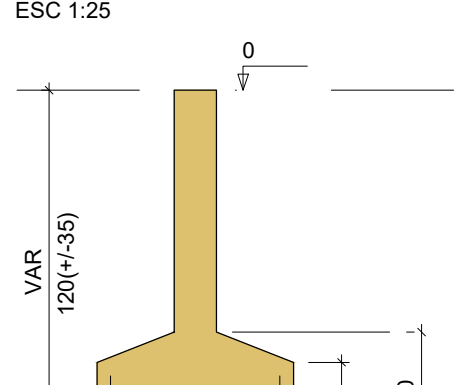
VISTA H

ESC 1:25



PLANTA

ESC 1:25



Solo com capacidade de suporte > 1.50 kgf/cm²  
Solo compactado sobre a sapata  
peso específico > 1600.00 kgf/m³

TERREO - L1

SEÇÃO

ESC 1:20

